



Radio Linked Deaf Alert for Fire and CO Detection and Alarm



Model FH700HIA



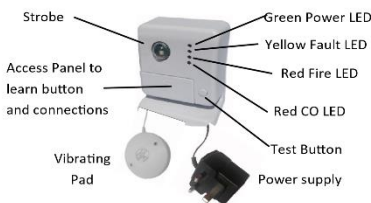
Description and Operation

The Firehawk **FH700HIA** Deaf Alert System comes with a Central Control Unit with built in high-intensity flashing beacon, a Plug in Power Supply/charger and a Vibrating Pillow Pad. It is linked by radio signal to additional Deaf Alerts, **FHB10W** smoke alarms, **FHH10W** heat alarms or **CO7B-10yW** Carbon Monoxide Alarms.

Features

- Radio-linked to additional Deaf Alert control centers, smoke, heat or CO alarms for early warning of a developing fire or carbon monoxide hazard via the vibrating pad and flashing beacon
- **SuperSafe** Radio Technology to enable fast and easy pairing and installation
- Supports multiple Deaf Alerts, alarms and Vibrating Pads
- Back compatible to earlier versions.
- Rechargeable battery allowing at least one month of use in standby before recharging.
- High intensity Flashing Beacon.
- Supports two Vibrating Pads with three metres of cable
- Test facility to check all parts of the system at once.
- Low battery warning
- Suitable for use in leisure accommodation vehicles

Installation

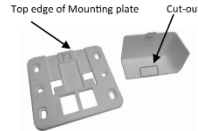


Place the Control Centre where the beacon can be seen and place the vibrating pad in the most suitable position (see "Using The System"). Prepare the Smoke Alarms and Radio Bases as follows:-

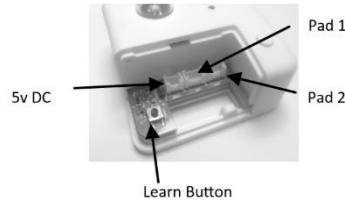
1. Remove the control centre stand (if fitted) by sliding the Control Centre upwards from the stand.
- 2) Remove the screw of the access panel and the Panel itself. Pass the Power and Pad wires through the back of the stand and Control Centre. Connect the wires from Pad 1 (and Pad 2 if two are being used) to the sockets (Pad 1 and Pad 2) and the power wire to the 5 Vdc socket.

Note: If you prefer to mount the control Centre on the wall, use the mounting plate (shown below) and attach it to your chosen position on the wall with suitable fixing screws. Slide the Control Centre down onto the plate to locate it. Remove the cut-out in

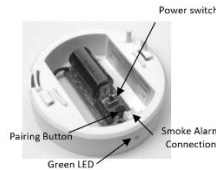
the bottom of the access panel.



Connect the Pad wires to Pad 1 socket and the black power wire to the 5 VDC socket.



- 3) Locate a mains power socket near to the point of use of the FH700HIA Deaf Alert Control Centre and plug in the power supply
- 4) Turn on the power switch of the radio base shown below.



- 5) Choose the location of the smoke alarm in accordance with the instructions and guidance in its separate handbook and move it to that location.

Do not fit permanently to the ceiling until all parts of the system have been learned and tested to ensure there are no obstructions to the radio link.

- 6) Ensure all parts of the system are connected and turned on.
 - a. Press the Learn Button on the Control Centre and wait for the green LED to start flashing.
 - b. Press the learn button in the smoke alarm radio base **and attach the alarm to it within 15 seconds**, then ...
 - c. wait for 2 beeps to ensure the learning process has started (approx. 5 minutes).
 - d. Repeat b and c above on all alarms in the system.
 - e. **All alarms will then beep twice at the end of the learning process.**

Testing the System

Press the test button on the control centre. The four LEDs should flash one after another followed by flashes from the beacon, beeps from the fire alarm and the pad should operate. Repeat the process on all other parts of the system; the alarm should sound followed by flashes from the strobes and vibrations from the pads.

- 7) Refit the cover with the screw or security label and fit to the control centre stand.
 - 8)The Deaf alert system is now ready for use.
- Green Power LED.** This will flash once a minute to indicate that the power is connected. It will also flash once a second during learning.

Yellow Fault LED will flash once every minute if there is a fault in radio transmission, pad connection, or a low battery.

Red Fire Alarm LED will flash during a FIRE and when tested from a smoke alarm.

Red CO Alarm LED will flash if Carbon Monoxide has been detected and when tested from the carbon monoxide alarm.

Adding and Removing Components to or from the System

If it becomes necessary to move a smoke alarm or the control centre further away from its original learned location The System MUST be re-learned.

If it becomes necessary to add a second Vibrating Pad, Deaf Alerts or Alarms then proceed as follows:-

- a. Power the system down by turning off the power switch of all Radio Pattresses and removing the power plugs from all Deaf Alerts. Plug back in and turn on Radio Pattresses after five seconds
- b. Re-learn the system as in 5) and 6) above.
- c. If the learning process repeatedly fails call the helpline on 0800 008 6568.

Using the System

General Guidance on use.

The entire deaf alarm system should be tested at least once per month. The location and type of equipment should be carefully chosen to ensure it is suitable for the individual being protected. Full guidance on this can be found in BS 5839-6 section 14. In brief, the vibrating pad is for use under the pillow or mattress, laid flat and as close to the individual as possible. **WARNING -DO NOT place the vibrating pad within 15cm of any heart pacemaker.**

Strobe lights and Epilepsy

Strobe lights can, in certain circumstances, trigger an epileptic seizure. However, this Deaf Alert has been designed and built to meet the requirements of BS5446- 3:2015 which requires that the frequency of the flashing strobe should not be more than 2 hertz. The Epilepsy Foundation say " Generally, flashing lights most likely to trigger seizures, are between the frequency of 5 to 30 flashes per second (Hertz)" For further guidance see their link at: <http://www.epilepsy.com/learn/triggersseizures/photosensitivity-and-seizures>.

Do not change any components of the system for; or add any additional components; that have been made by other manufacturers. Doing so may cause damage and unreliable operation. Up to 14 alarms may be paired to the system.

Warranty

FireHawk guarantees to you, as a purchaser, that the enclosed Deaf Alert will be free from defects in material, workmanship or design under normal use and service for a period of 10 years. This Guarantee is not assignable. Our liability to you, under this guarantee is limited to repairing or replacing any part which we find to be defective in material, workmanship or design, free of charge to the customer, upon sending the product with proof of date of purchase, postage paid to FireHawk, Units 15/17 Manford Industrial Estate, Manor Road, Erith, Kent DA8 2AJ UK. The terms of this guarantee will not apply in the following circumstances: If the product has been modified, dismantled, contaminated, damaged, neglected or otherwise abused or altered following the date of purchase, or if it fails to operate due to incorrect siting, installation, maintenance, inadequate or over voltage electrical power, or damage caused by failure to abide by the instructions supplied in which case no claim under the guarantee will be entertained. The liability of FireHawk arising from the sale of this product or under the terms of this guarantee shall not in any case exceed the cost of replacement of the product. In no case, shall FireHawk be liable for consequential loss or damage resulting from the failure of the device or the breach of this or any other guarantee, express or implied or for damage caused by failure to abide by the instructions supplied. This guarantee does not affect your statutory rights.

For further information contact:-
 Fireblitz Extinguisher Ltd,15/17 Manford Industrial Estate
 Manor Road, Erith, DA8 2AJ UK
 Tel: 01322 342 238. **Helpline:** 0800 008 6568
Text: 07885 831 239 **Fax:** 01322 331 532
Email: customerservices@fireblitz.co.uk
Website: www.fireblitz.co.uk

